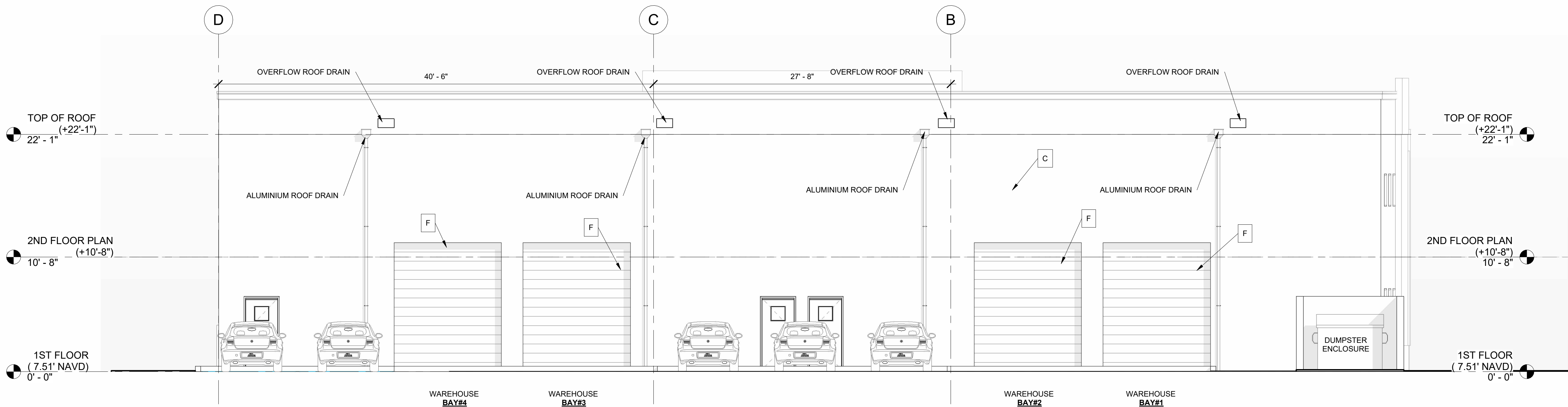


1 PROPOSED EAST ELEVATION
3/16" = 1'-0"



2 PROPOSED EAST ELEVATION BW
3/16" = 1'-0"

AAC

PZ23-12000055

08/19/2025

FINISH NOTES

- A ALUMINIUM EYEBROW
COLOR: BRONZE
- B 5/8" STUCCO FINISH PAINTED
COLOR: EURO GRAY
MANUFACTUR: DYNASTY MARQUEE
- C 5/8" STUCCO FINISH PAINTED
COLOR: GRAYCLOTH
MANUFACTUR: DYNASTY MARQUEE
- C-1 5/8" STUCCO FINISH PAINTED
COLOR: POLAR BEAR
MANUFACTUR: DYNASTY MARQUEE
- D FIXED IMPACT RESISTANT WINDOW
- E IMPACT RESISTANT SWING
SOLID METAL DOOR.
- F ROLL-UP DOOR.
- G STUCCO RISE BAND